



WELCOME

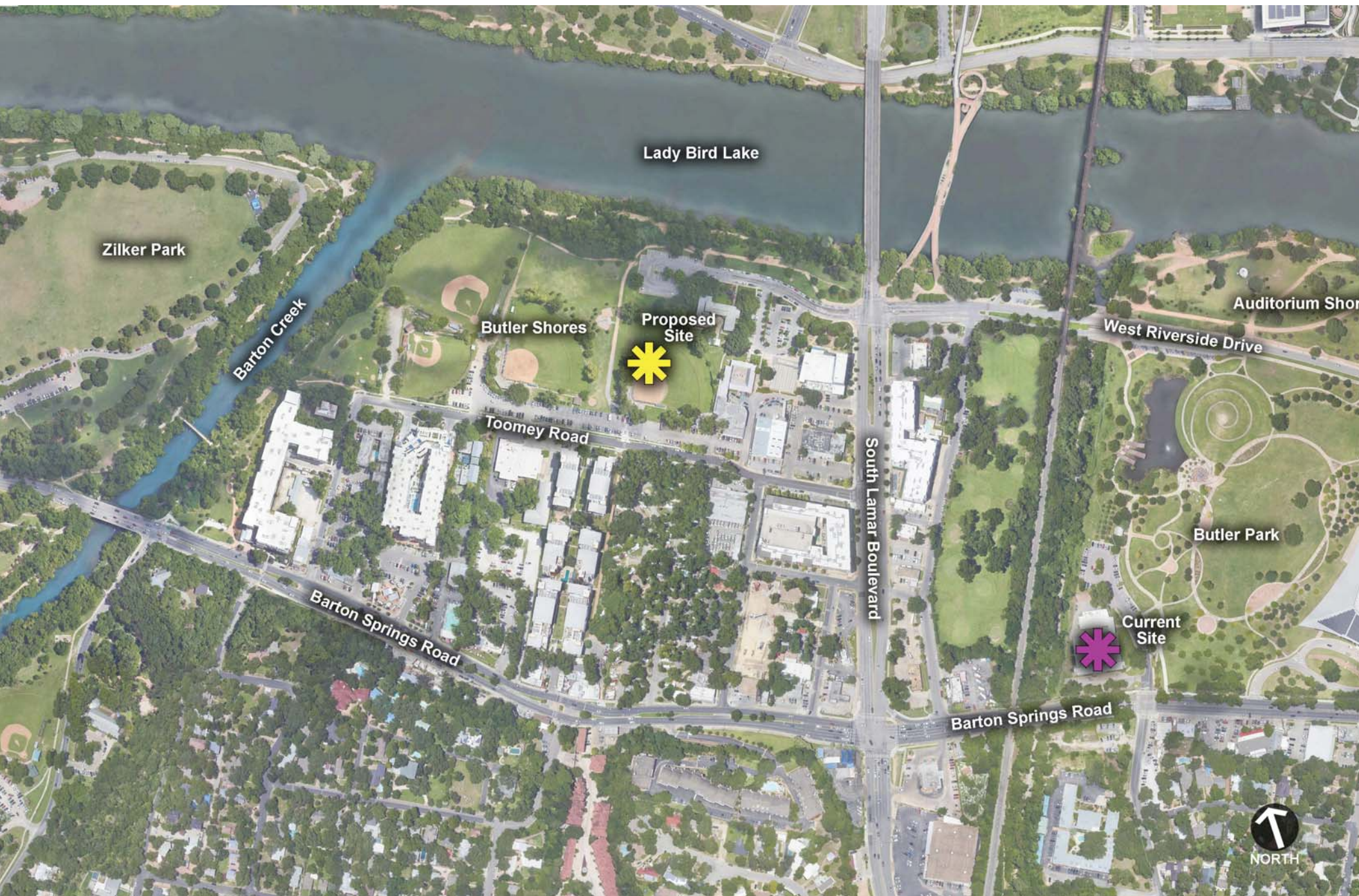
Dougherty Arts Center Redevelopment Open House





The mission of the Dougherty Arts Center (DAC) is to support emerging through established artists who create, showcase, and experience the arts first hand. We envision the DAC as Austin's cultural living room where people of all ages races, ethnicities, abilities, genders, sexual orientations, socio-economic statuses, nationalities and religions gather to create community through the arts.





What's Working?

- Centrally located
- Students enjoy the warmth and character of the building
- Staff is genuinely interested and invested in facilitating a good experience for each student
- The vitality and opportunity the center provides to the Austin arts community



What's Not Working?

- The facility is "surviving not thriving"
- Facility was built in 1970
- Aging facility requires increasing maintenance and repair costs
- Facility lacks flexibility
- Inadequate outdoor play areas
- Building sits within FEMA 25 year floodplain



1947 The building at 1100 Barton Springs Road is built as the Navy and Marine Reserve Building

1978 The building is purchased by the Dougherty family and donated to the City of Austin as the Dougherty Arts Center

2008 A study prepared for the EPA confirms that the building sits on a former landfill

2009-2010 Building assessment completed with 2006 bond funding determines the building is beyond useful life

2010-2011 Five stakeholder focus groups are conducted to review study results and envision program requirements for a new DAC

2012 Friends of the DAC is resurrected to advocate for a new DAC

2013 Site registered with TCEQ as former landfill

2014 Architectural Feasibility Study completed by Architecture Plus determines that floodplain issues prevent rebuilding on current site

2017 RVI and Studio 8 undertake feasibility study for Butler Shores site

2017-2018 Bond Election Advisory Task Force proposes \$25 million for replacement of the DAC

1947

1978

2008

2009-2010

2010-2011

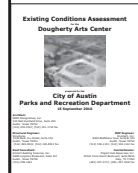
2012

2013

2014

2017

2017-2018



"Comfortable and homey like your favorite house shoes."

"The very humble scope of the space is very corporate."

"The building is literally and figuratively alive."

100% of respondents said natural light is important to the character of the DAC.

100% of respondents said a connection to nature is important.

How We Got Here



VISION

- Public gathering areas (inside and outside) that foster a sense of community for Austinites of all ages
- Spaces that inspire creativity; a feeling that this is a place to make things
- Gallery Space that meets the requirements of the Smithsonian Institution
- Rehearsal Rooms that can be reserved by students, faculty or the public
- New technology options for students and faculty
- Spaces that are flexible enough to serve multiple needs, yet able to accommodate their specific function well
- Rentable public space (similar to other PARD facilities)
- Facility that embraces the history and emotion of the DAC
- Top Words to describe the New DAC Facility:
Flexible, Adaptable, Authentic, Polished, Surprising, Inviting, Accessible, Cutting Edge, light, Functional, Industrial, Human Scale, Comfortable, and Beautiful

PROGRAM SPACES

SCHOOL & PRE-SCHOOL

- Arts Classrooms
- Digital Technology Lab
- Commons/Gathering Space
- Teacher Areas
- Storage and Support Spaces

STUDIO SPACES

- Multi-discipline Studio Spaces
- Outdoor Studios
- Artists Resource Center
- Artist in Residence areas
- Storage and Support Spaces

GALLERY

- Public Gallery (Smithsonian Inst. Stnd.)
- Outdoor Gallery
- Storage and Support Spaces

PUBLIC SPACES

- Entry and Cafe
- Outdoor Gathering

THEATER

- Public Gallery
- Proscenium Theater
- Black Box Theater
- Rehearsal Spaces
- Storage and Support Spaces



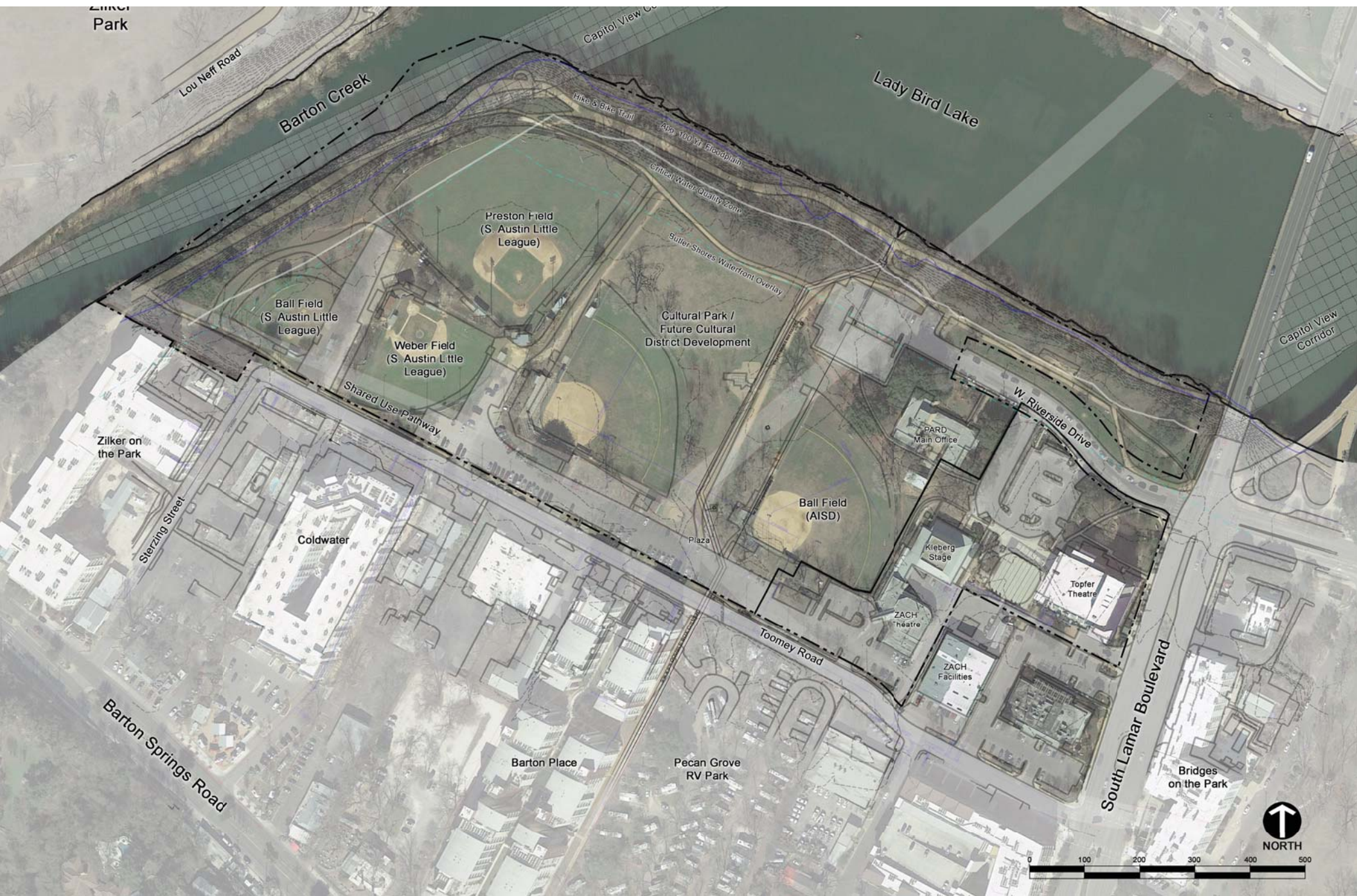








Theater & Lobby Space



Butler Shores Existing Conditions





- Potential Development Scenario**
- Building Facility
 - Approximately 40,000 sf
 - 2-3 Story Structure
 - Parking Structure
 - 2 Levels with approximately 200 spaces
 - Separated Theatre & School Drop-Off Areas
 - Outdoor Courtyard Spaces
 - Integrated Cultural Park & Trailhead Connection to Town Lake Trail
 - Connection From W. Riverside Drive to Toomey Road



Stay involved: If you haven't already, take our survey at <https://www.surveymonkey.com/r/DACProject> to let us know what you think!

Stay informed: For questions and comments, please send an email to DACProject@austintexas.gov. Stay in touch with progress at the project website: www.austintexas.gov/DACProject.